



# Newsletter

Issue: 85

Sept/Oct2014

## Chair's Report

*Peter Adams*

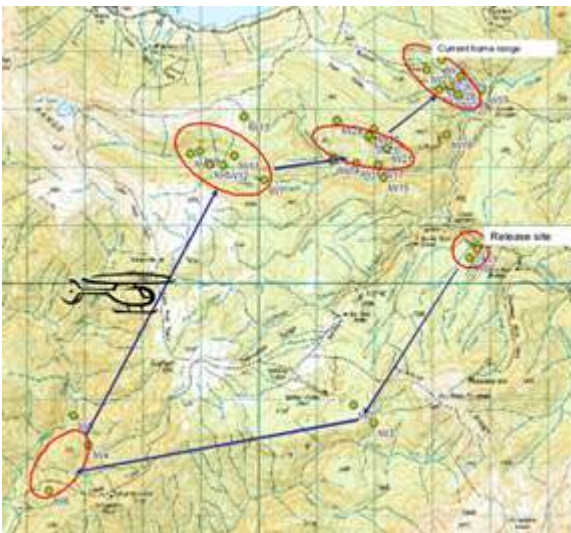
Great news – we have already had up to six breeding attempts by our kiwi this season. Fingers crossed that some of them will be successful and will result in chicks to augment our kiwi population. Thanks to all the kiwi team for their ongoing hard work. Thanks also for two new grants, which will allow us to continue with the kiwi project from the DOC Community Conservation Partnerships Fund and from Kiwis for Kiwi.

The expected beech mast has hit and rat numbers all over South Island are reaching plague numbers. The Mount Arthur area was treated with aerial 1080 in August as part of the planned TB Free New Zealand operations from last year. The Cobb side will be treated in October as part of the DOC “Battle for our Birds”. We will carry on with our trapping program as normal and it will be interesting to see the impact of the drops on pest numbers over the next few months.

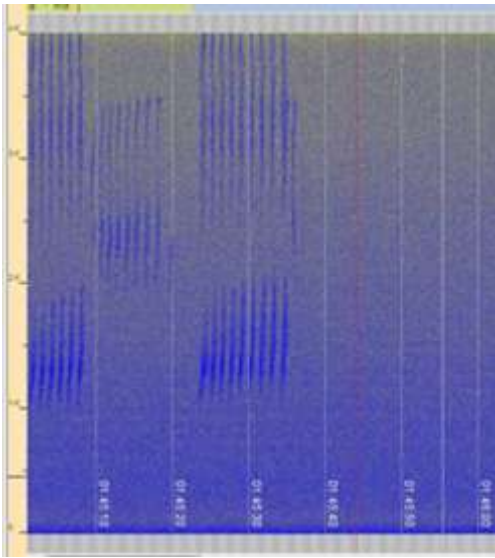
The new FOF uniform was unveiled recently at a social event at the Sprig and Fern – it not only looks good, but it makes us all safer and the FOF presence up the hill more visible. We also have had two well-attended events covering outdoor first aid and 4WD skills training. Thanks to the committee for organising these and to DOC for the funding.

## Kiwi Report

*Sandy Toy*



Breeding has come early to the kiwi on the hill this year. Five pairs have started incubation. This is at least six weeks earlier than we have seen in previous years. The snow is making it a bit tricky to monitor some of the more distant pairs. Hoire and Poai, the “star” parents from 2013/14 have already abandoned their 2014/2015 attempt. Early abandonment usually indicates an infertile egg, but with incubation starting so early, it's possible a second attempt may be made.



We are delighted that all three of the females from New Creek that we repatriated when they wandered after translocation are breeding. One of the three is Iwa who we recaptured near Spludgeon's shelter in June 2013 and flew to Deep Creek. She moved into Heath Creek and stayed there until February 2014, when she moved over to Peat Creek where she has occupied a very tight little home range, >1 km from the nearest transmitted kiwi (see map). In August her activity indicated she was incubating, which might be a phantom-incubation or could indicate she had found a non-transmitted male. So we put out listening devices to see if we could hear a male close-by. To our huge delight we found there is a male in the vicinity.

### ***Kiwis for Kiwi Auction***

October is Save the Kiwi month and Kiwis for Kiwi will be putting a range of kiwi experiences up for auction on Trademe between 20-26 October. Peter and Clare have generously donated a two night stay at the Resurgence luxury eco-lodge which, combined with the opportunity to join the kiwi monitoring team in the Flora, makes an amazing Kahurangi kiwi experience. A large portion of funds from the auctions go to the donating project. Kiwis for Kiwi do a fantastic job of fundraising and advocating for kiwi conservation – check out their web page <https://www.kiwisforkiwi.org/> - and have generously supported FOF's kiwi project for the last 3 years. So tell your friends about the auction and consider treating yourself to one of the many kiwi experiences that will be on offer.

### **Article on 1080**

Maryann and Bill have had a big article on 1080 published recently in the Nelson Mail. This can be found at <http://www.stuff.co.nz/nelson-mail/opinion/10514219/Pests-wiping-out-unique-land-of-birds>.

### **Maryann Ewers Retires from FoF Committee**

*Chris Potter*

At the FoF AGM in May, Maryann Ewers retired from the FoF committee. This is easy to say, but actually it's a really big deal for FoF.

Maryann was there at the birth of FoF in 2001 as a founder and prime mover and she has "served" (i.e. steered!) us ever since - as Secretary, Chair, fund-raiser and ambassador. Thirteen years may not sound all that impressive, but when you realise that the 15-year-old Motueka High School kids who helped us in those early days are now 28, you should get a different perspective.

All of the amazing achievements of those 13 years come as a result of the dedication and persistence of individual people, and none has been more dedicated and persistent than Maryann. I'm sure she and Bill will continue to contribute (not all the work is done by the Committee!) and I'm sure she doesn't need our thanks for her contribution, as FoF's on-going achievements will be reward enough. But there's no doubt we owe her, both for our existence and for our successes. Come to think of it, the country owes her, too – for turning a dream into a real difference for an iconic corner of a great National Park.

### **FOF Social Occasion;**

Come & view FOF's new, eye-catching display boards which will be used for FOF promotions at public events and places (eg Flora carpark on a busy day)  
We also need volunteers to front such a FOF stall / display

Some 'training' and info sheets have been prepared for such promotions  
All vologies are invited  
Thanks to DOC for funding the displays

Bring a plate / BBQ  
1pm Saturday 19 October  
@ Robin & Sandy's place; 78c Little Sydney Road  
RSVP

