



# Newsletter

Issue 99

July 2017

## New Committee Ushered In at AGM

*ch ch ch changes...*

Some changes to the Friends of Flora Committee were endorsed at the May Annual General meeting. New committee members Gerald Bruce-Smith and Michelle Bridge were welcomed on board and Robin Toy, Ivan Rogers and Maryann Ewers bid adieu. Robin remains heavily involved with data management and the kiwi project and Ivan continues in his DOC liaison role. Maryann's departure marks the end of an era...

## Thanks Maryann

*Mary bows out*

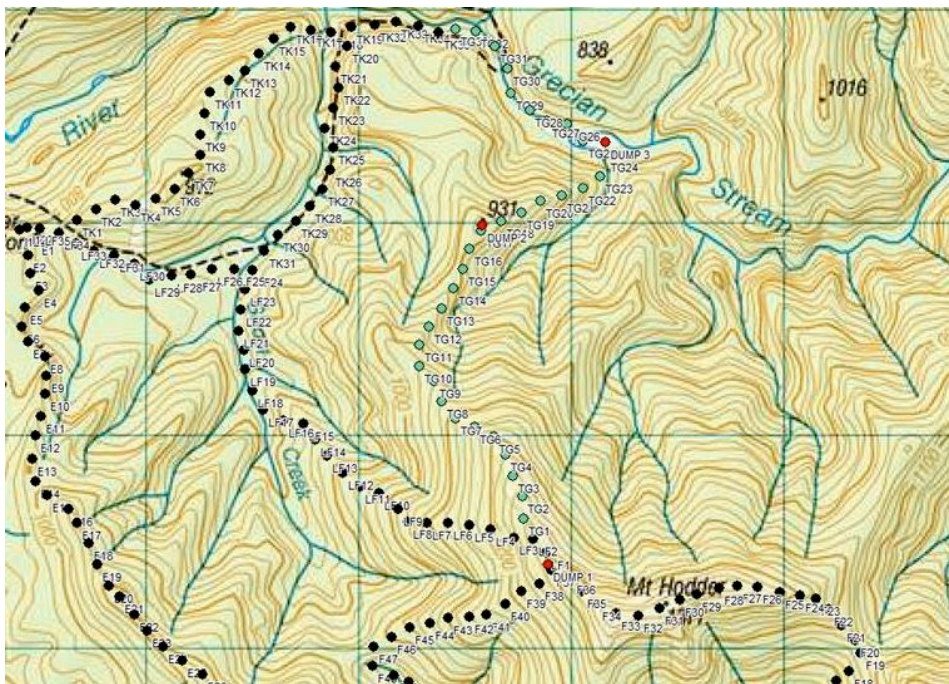
Founding FOF-er Maryann Ewers, along with Bill Rooke, got Friends of Flora off the ground back in 2001. For the next 16 years Maryann threw herself into nurturing the early FoF and seeing it expand and diversify. The re-establishment of whio in the Flora, the translocation of great spotted kiwi and the growth of the trapped area from the Flora Rd to its current 12,500Ha (and growing!) footprint have all had Maryann pushing hard and motivating others to make things happen. Maryann and Bill ran their guiding company Bush and Beyond for many years in tandem with chairperson, secretary, treasurer and advocacy roles within FoF. Through Bush and Beyond they met former Prime Minister Helen Clark and their friendship led to Helen becoming FOF's patron. Maryann and Bill were worthy recipients of the prestigious "Old Blue" award for services to conservation in 2012. Even in "retirement" the couple continue to work for FOF as volunteer trappers. Thanks Maryann. Thanks heaps.



## Grecian Traps

### *FOF's tentacles creep North*

Three bundles of traps were flown into the new TG Line starting FOF's move to protect whoo and great spotted kiwi/*roroa* in the northern end of the managed area. The boxes, beautifully made by volunteers at the Waimea Menzshed are of the new double-set DOC 150 design - like the new I Line traps. A big thanks to Robin Toy for pushing the move, Menzshed volunteers for their tidy work and Regan Bridge for making it happen on the ground.



## For the whoo fans

### *Ivan opines on Radio Live*

While the Flora and Grecian are classified as a "recovery site" in terms of survival of this icon species, The Wangapeka/Fyfe is one of a handful of **security** sites around the country. Aiming ambitiously for a stable population of 50 breeding pairs, this autumn's dog-assisted census revealed there are currently 43 pairs resident. Not too far from the target! Ten years ago just 16 pairs were counted in a dog-assisted census. Minister Maggie Barry was clearly excited by the news and her press release led to some media attention to the rare "good news" story. DOC's Ivan Rogers was interviewed on Radio Live - he even managed a plug for the Flora whoo and FoF.

Paste this into your browser (or type it in if that doesn't work):

<http://www.radiolive.co.nz/home/audio/2017/06/environews---whio---blue-duck-.html>



Species dog "Fenn" on the Wangapeka survey. Follow his nose to the whio.  
Pic: John Henderson

## Footnote

*Ouch!*



You would not have wanted to be around when this happened. Scene: the concrete strips, Graham Valley Road, June 2017  
Pic: Ivan Rogers